



# Mensch und Maschine Software SE

## Company Presentation

Status April 23, 2025 / Q1 report 2025

man  machine  
Software

mensch  machine  
Software

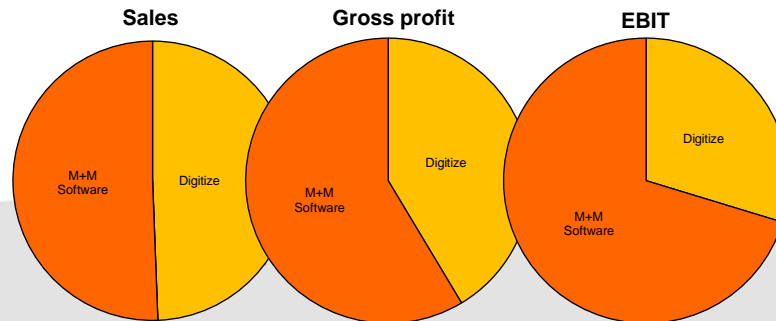
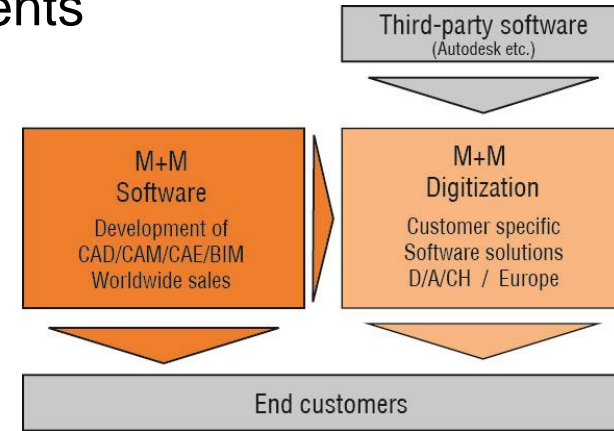
# Business model

## ■ Leading developer of Technical Software Solutions

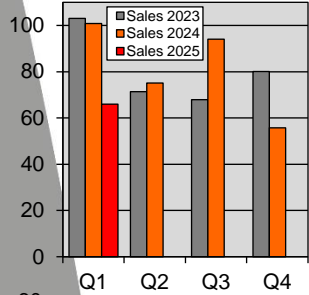
- ◆ CAD/CAM/CAE = Computer Aided Design / Manufacturing / Engineering  
PDM/PLM = Product Data/Lifecycle Management / BIM = Building Information Modelling/Management
- ◆ Founded 1984 – 41 years on the market // IPO 1997 – 28 years public // ~1,200 employees

## ■ Added Value well balanced over 2 Segments

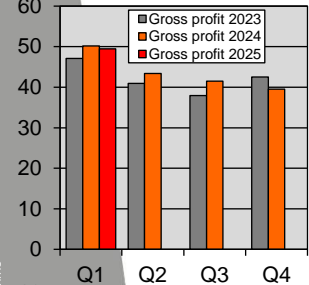
- ◆ **M+M Software: Proprietary Standard Software**  
CAD/CAM / BIM/Civil Engineering / Gardening/Landscaping / CAE
- ◆ **Digitization\*: Customized Software Solutions**  
Proprietary Added Value: Customer Projects / Training / Hotline etc.  
Third-party software (Autodesk etc.): Leveraging M+M market share  
(\*former segment name: VAR Business)



# Sustainable business development

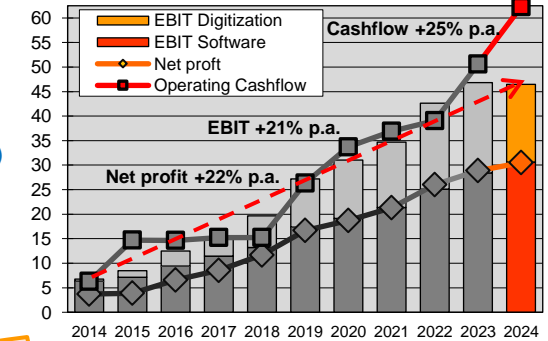
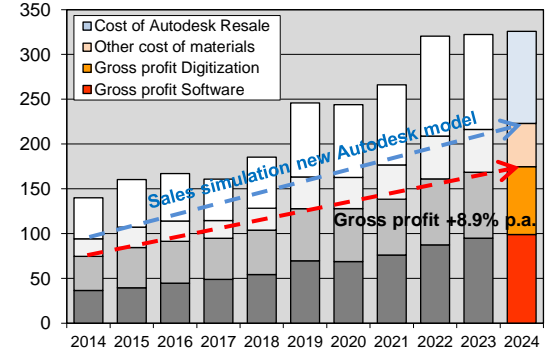


- Record Sales 2024: EUR 324.84 mln / +1.1%
  - Q3: final reselling boost / Q4: Autodesk transition reducing purchase&sales volume
- Record Gross profit 2024: EUR 174.59 mln / +3.6%
  - 10YR growth 2014-2024: +8.9% p.a. / much more steadily than sales development
- EBIT 2024: EUR 46.47 mln / -0.8% / System changes caused a dip in Q4
  - 10YR growth 2014-2024: +21% p.a. / highly disproportionate gross profit
- Record Net profit 2024: EUR 30.49 mln / +5.6% // EPS 180 Cents
  - 10YR average net profit growth 2014-2024: +22% p.a.
- Record Cashflow 2024: EUR 62.32 mln / +23% // CPS 369 Cents
  - 10YR average cashflow growth 2014-2024: +25% p.a.
- Record Dividend proposal 2024: 185 Cents (PY: 165 / +12%)
  - 10YR average Dividend growth 2014-2024: +25% p.a.



- Sales Q1/2025: EUR 66.02 mln / -35% / Autodesk transition
  - Software: EUR 32.63 mln / +6.4% // Digitization: EUR 33.39 mln / -52%
- Gross profit Q1/2025: EUR 49.44 mln / -1.5% / margin jump to 74.9% (PY: 49.7%)
  - Software: EUR 28.98 mln / +4.6% // Digitization: EUR 20.47 mln / -9.0%
- EBIT Q1/2025: EUR 16.11 mln / -6.2% / margin jump to 24.4% (PY: 16.7%)
  - Software: EUR 11.32 mln / +14.4% // Digitization: EUR 4.79 mln / -31%
- Net profit Q1/2025 : EUR 10.39 mln / -6.3% // EPS 62 Cents (PY: 66)
- Cashflow Q1/2025: EUR 16.11 mln (PY: 25.52) // CPS 96 Cents (PY: 151)

Q1/2025



# Sustainable business development: Outlook

## Gross profit +8.9% p.a. / EBIT +21% p.a. – what's the trick?

- Very simple method: Opex increase 2014-2024 just +6.2% p.a.
- Opex development in the M+M Group is controlled continuously & locally (~100 profit centers) at ~2/3 relative to gross profit development
  - Continuous profit gains through strict cost control management
- ✓ Working well even despite short-term dips in gross profit development (2016/17: Gross profit +3.7% / EBIT +22% // 2YR 19/21: Gross profit +8.2% / EBIT +28%)

## Sustainably profitable strategy - also for the future:

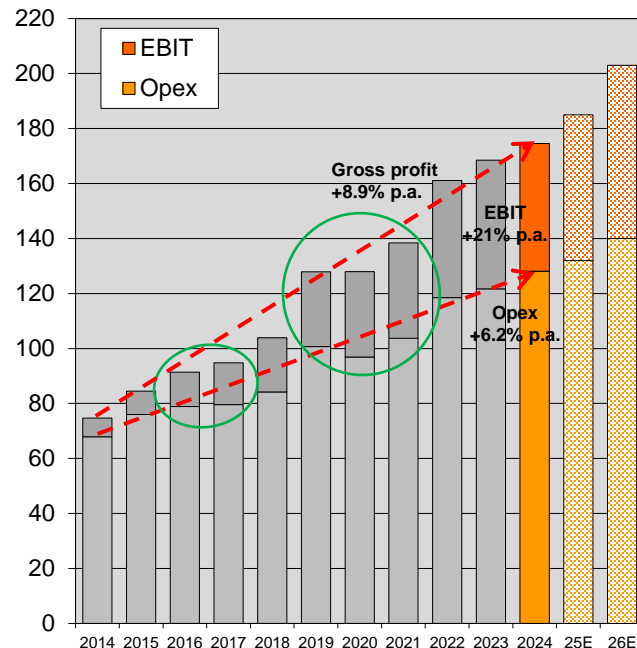
- Organic growth + cost discipline = economy of scale effect

## Long-term growth target (organic):

- Profit doubling in 4-5 years: EPS >360 Cents by 2028/29

## Targets 2025/26E: Continuation of sustainable development

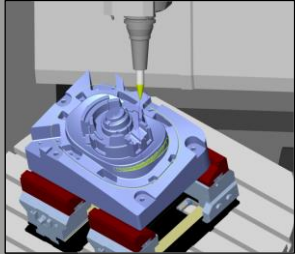
- ◆ 2025E: Retarding effects from system changes are fading out  
Gross profit +5-7% / EBIT/EPS +9-19% Dividend +20-30 Cents
- ◆ 2026E: Return to more dynamic growth estimated  
Gross profit +8-12% / EBIT/EPS +13-25% / Dividend +25-40 Cents



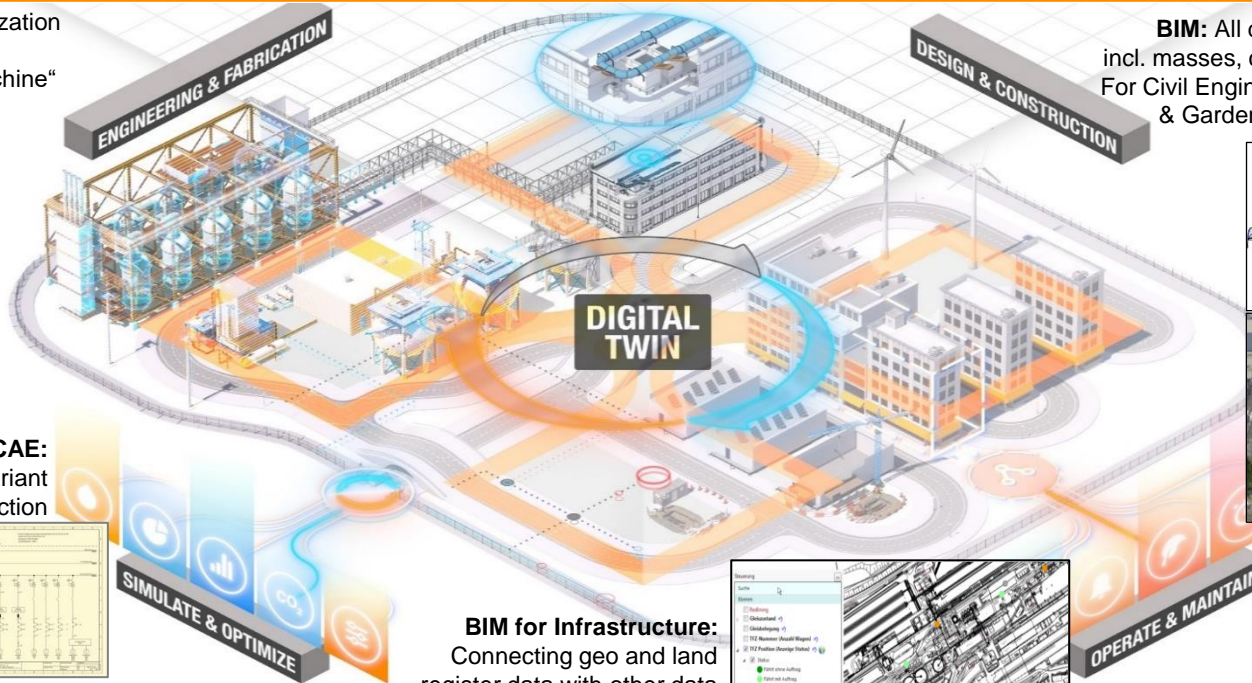
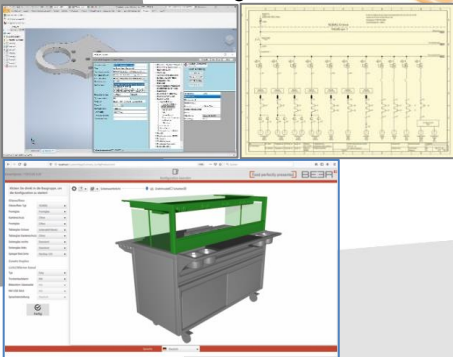


# The M+M Portfolio: Various Digital Twins

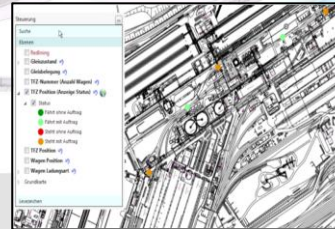
**CAM:** Simulation/Optimization of the entire machining process in a „Virtual Machine“



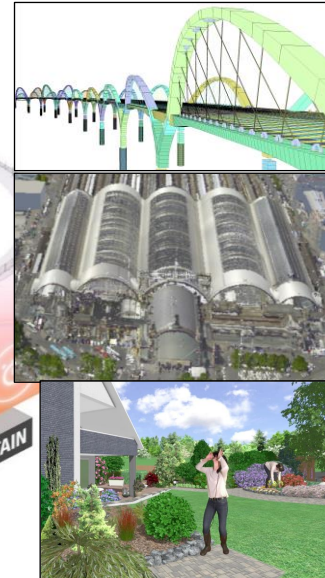
**Manufacturing/CAE:**  
PDM, plant or variant  
design/construction



**BIM for Infrastructure:**  
Connecting geo and land register data with other data sources to Digital City or Factory



**BIM.** All disciplines of a building in 3D, incl. masses, cost dimensions and timeline. For Civil Engineering, Building Construction & Gardening/Landscaping/Earthworks





# CAD/CAM in practice (M+M Software)

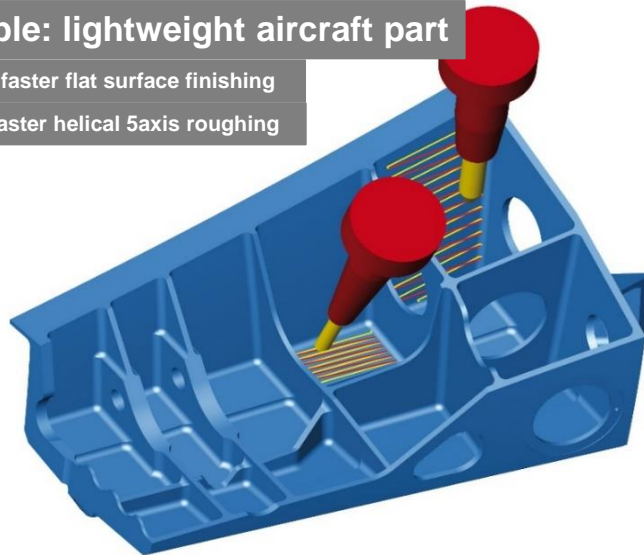


- CAM – Computer Aided Manufacturing
  - 100% Subsidiary Open Mind – Product line *hyperMILL*®
  - High end: Average revenue approx. EUR 30,000 per seat
  - Globally >10,000 customers with >20,000 CAM seats

## Example: lightweight aircraft part

Up to 10x faster flat surface finishing

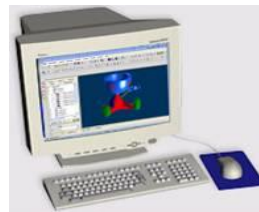
Up to 5x faster helical 5axis roughing



Precision machine tools' purchase prices are in the six or seven digit Euro range. *hyperMILL*® reduces milling times by up to 90% through intelligent machining strategies, pushing return on investment for these expensive machine tools to completely new dimensions.



# hyperMILL®



CAD Software  
(3D design)



CAM Software  
generating NC  
code for machine



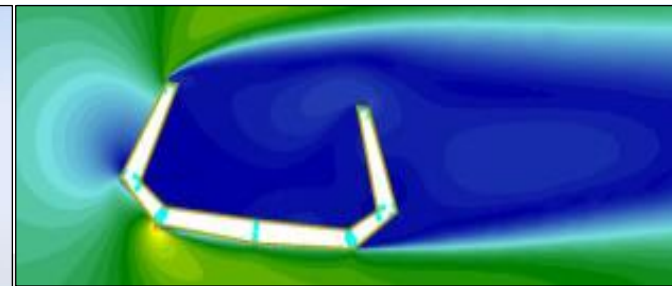
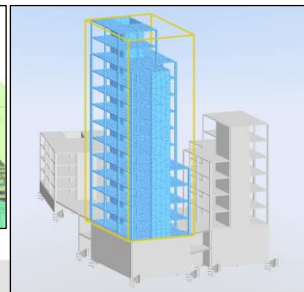
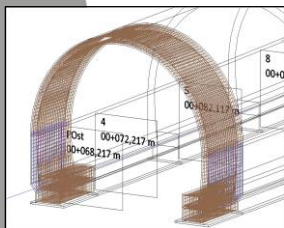
Precision machine  
tool with  
NC control

5x faster: Total milling time 2h05 instead of 10h30



# BIM in practice (M+M Software)

- BIM / Civil Engineering: Structural Analysis & Reinforcement Software
  - Subsidiary SOFiSTiK AG (est. 1987) / M+M share 51.4%
  - Technology leader in bridge, geotech/tunnel and building construction
  - Over 3,000 customers in more than 60 countries on all continents
  - Impressing References – e.g. Sixth Street Viaduct in Los Angeles, USA (2022)
  - Various special modules rounding up the software portfolio e.g.:
    - Bridge + Infrastructure Modeler to design Bridges, Tunnels and other profile buildings like noise barriers
    - CFD (Computational Fluid Dynamics) for wind analysis
    - Seismic analysis of building safety in case of earthquakes etc.



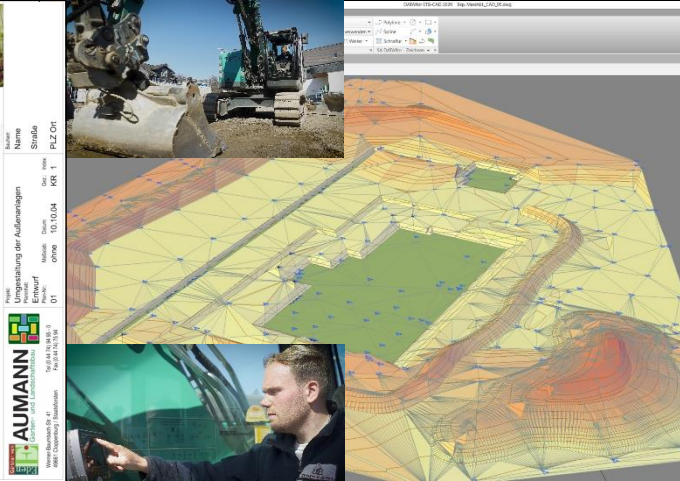




# BIM in practice (M+M Software)



- Gardening / Landscaping / Earthworks for Architects and Implementers
  - M+M Subsidiary DATAflor, Goettingen, Germany (est. 1982) / M+M share 67.2%
  - Integrated software solutions not only containing graphical planning but also calculation, tender, quoting, construction site controlling and billing
  - Three examples from the extensive functionality:
    - Garden plan with planting suggestion and 'flowering calendar' across the seasons (left picture)
    - Digital terrain model: Comfortable 3D design / Output to excavator control units (middle picture)
    - GRUENSTUDIO 3D: Live experiencing the future garden e.g. via VR glasses (right picture)





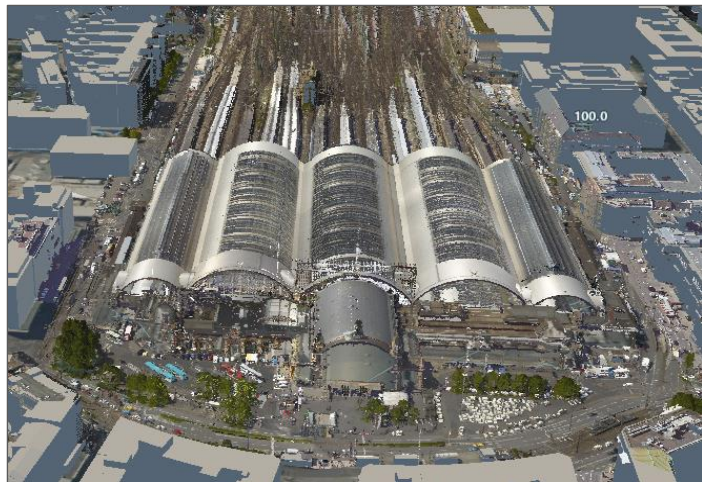


# Digitization in practice

## ■ Architecture: BIM – Building Information Modelling / Management



BIM training series for all stakeholders in construction projects - from draftsman to project manager. Since 2012 more than 10,000 participants have been trained/certified.



Application/Countrification  
family adapting Autodesk Revit  
to local standards & needs

**bim booster**

Planning / Model checking  
Calculation Module  
2D/3D Quantity Take Off



# Digitization in practice

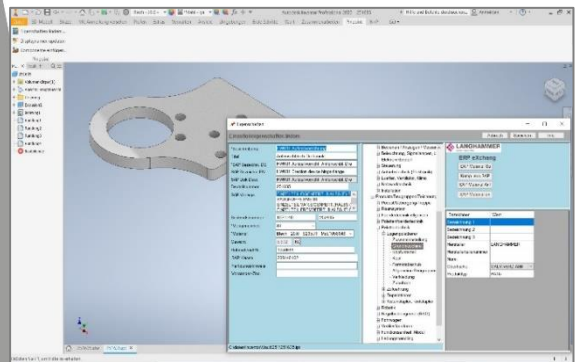


## ■ Solutions for Manufacturing Customers with high savings potential, e.g.:

PDM/PLM: Connecting design and commercial data, e.g. SAP

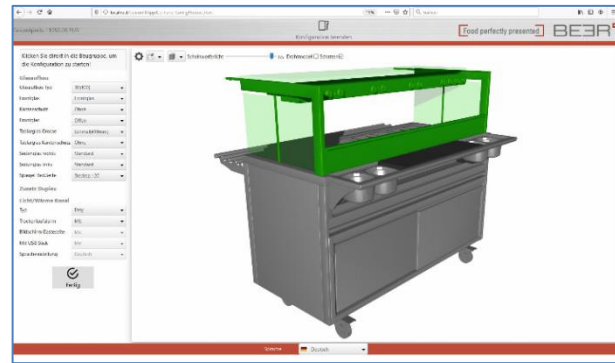
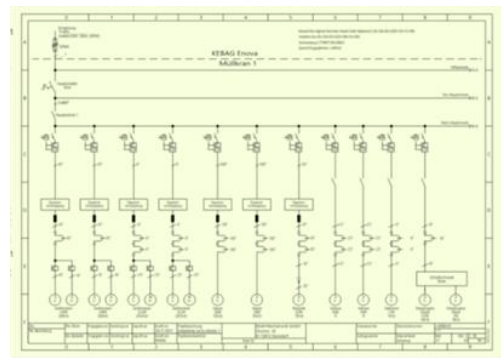
CAE for large plants: electrical, hydraulics, pneumatics as well as building services

Fully automated variant design for profitable production from batch size 1



pdm  booster

**exs**  
THE FUTURE OF CAE



custom  X

cm  ready

New CIM training series (Computer Integrated Manufacturing)



man  machine  
Software

mens  machine  
Software

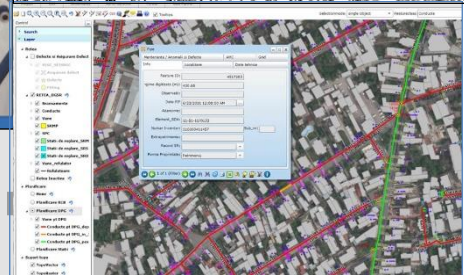
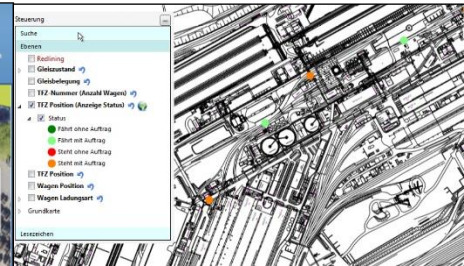
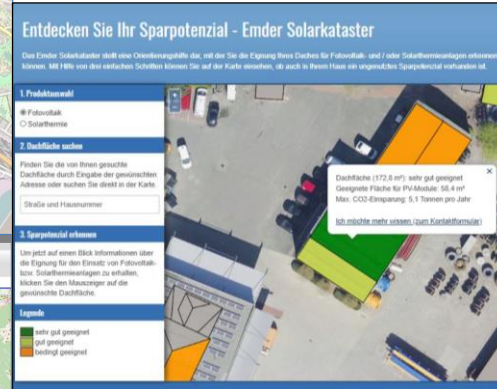
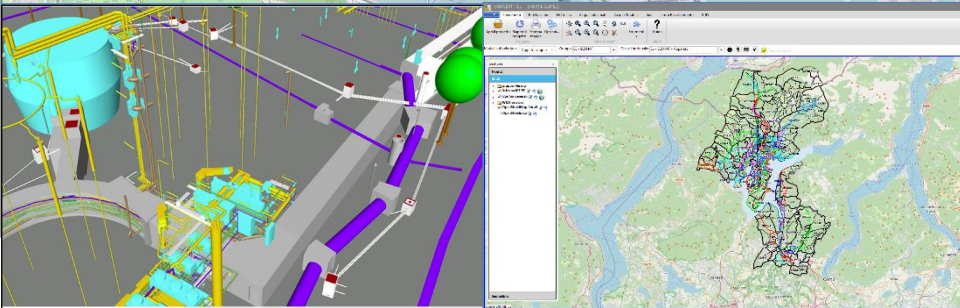
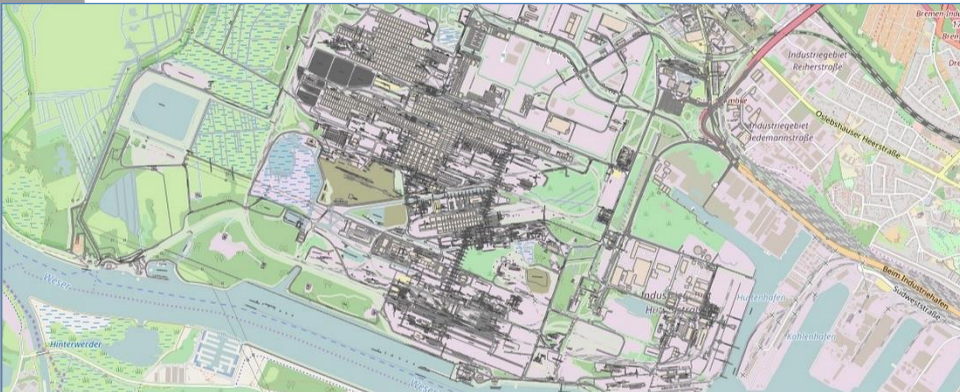


# Digitization in practice



- Building Information Management / BIM for Infrastructure: MuM MapEdit as a data hub for the Digital City or Factory

**Approx. 2,500 seats at nearly 200 customers in D, CH and Europe: Municipalities, Suppliers, Industry, Ports/Airports, Planning Offices...**



mapedit

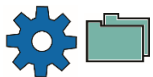


# Allocation of Gross Profit (2024: EUR 174.59 mIn)

## Manufacturing (~55%):



- CAM Software hyperMILL / proprietary kernel hyperCAD S  
Target group: Owners/Buyers of Precision Machine Tools
- Digitization: Projects/Training for Mechanical/Electrical/Process Engineering, Hydraulics, Pneumatics, Automotive/Aerospace/Shipbuilding ...



## Architecture/Construction/Engineering (~35%):



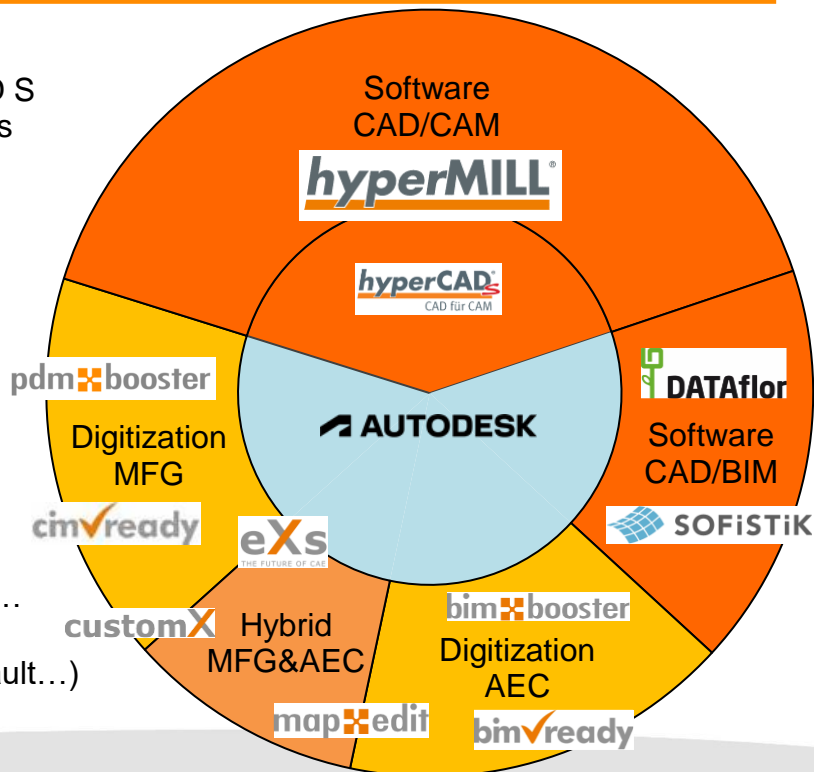
- Software: BIM/Gardening/Landscaping (DATAflor)  
BIM/Structural/Civil Engin/Bridge/Tunnel (SOFiSTiK)
- Digitization: Projects/Training for Architecture, Building Services, Facility Management ...



## Hybrid MFG & AEC (~10%):



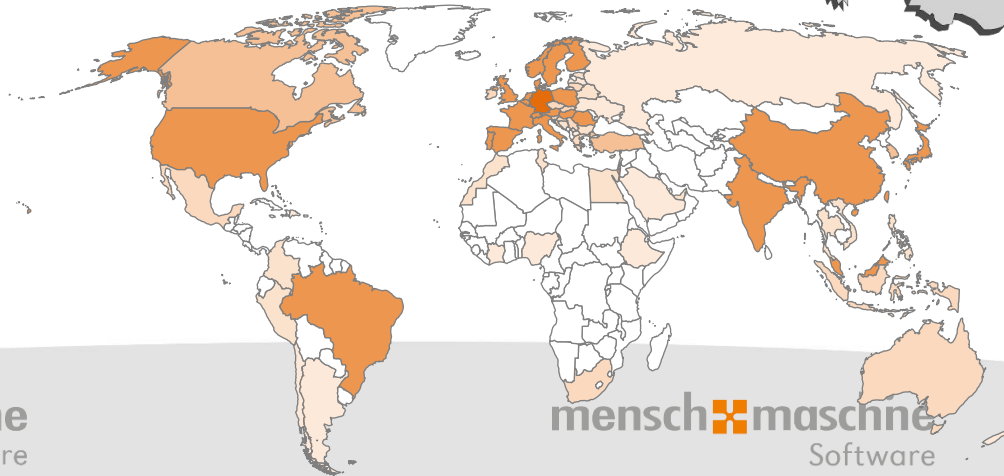
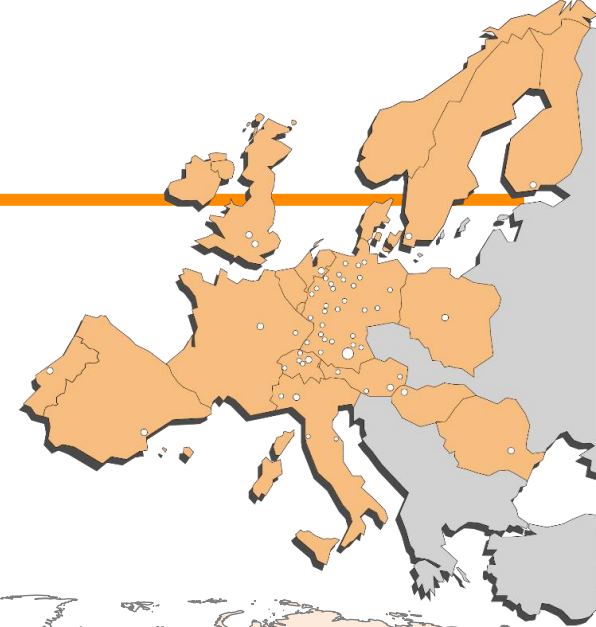
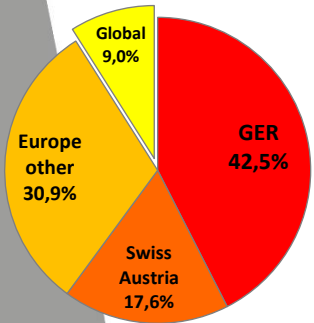
- CAE/eXs, BIM for Infrastructure (Digital City / Factory), Variant design / customX, iBIM for AEC subcontractors ...
- Common Base (Exception CAM):  
Autodesk CAD Standards (AutoCAD, Revit, Inventor, Vault...)  
Digitization: Autodesk Business / Software: OEM Licensing



# Global sales / DACH focus

## ■ Geographical sales contribution: (2024)

- ◆ Germany: EUR 138.5 mln / 42.5%
- ◆ Austria/Switzerland: EUR 57.3 mln / 17.6%
- ◆ Europe (other): EUR 100.8 mln / 30.9%
- ◆ Global: EUR 29.3 mln / 9.0% - surplus +10.4%
- ◆ M+M's own CAD/CAM and BIM / Civil Engineering Software is sold to more than 70 countries on all five Continents
- ◆ ~75 Subsidiaries in >20 Countries (Europe, Asia and America)
- ◆ Far over 100,000 active seats @ more than 30,000 customers



# Sustainability: Economy & Ecology in harmony

The M+M group is using all suitable roof surfaces in corporate ownership for regenerative power production with a total amount of ~200 MWh solar power p.a.



The M+M business model is based on resource savings for customers ...

- ✓ A precision tool tool machining two to five times faster consumes correspondingly less electricity
- ✓ The same applies when customers accelerate their technical processes by eXs, custom, PDM Booster and CIM Ready training
- ✓ Or when BIM Ready training and the use of BIM Booster enable more effective planning and resource-saving construction
- ✓ Or when large infrastructure operators can achieve their ambitious sustainability goals more quickly through MapEdit
- ✓ A structure planned and calculated with SOFiSTiK software uses less steel and concrete or can alternatively be made of a more environmentally friendly material such as wood
- ✓ With the Gardening/Landscaping design software from DATAflor, gardens or parks are created that make a direct contribution to CO<sub>2</sub> reduction

... which should be enough to more than compensate the M+M CO<sub>2</sub> footprint



**Digitalization is  
Sustainability**



# M+M: Entrepreneurial & Public Company

## Listings:

- ◆ scale, Frankfurt (scale30)
- ◆ m:access, Munich

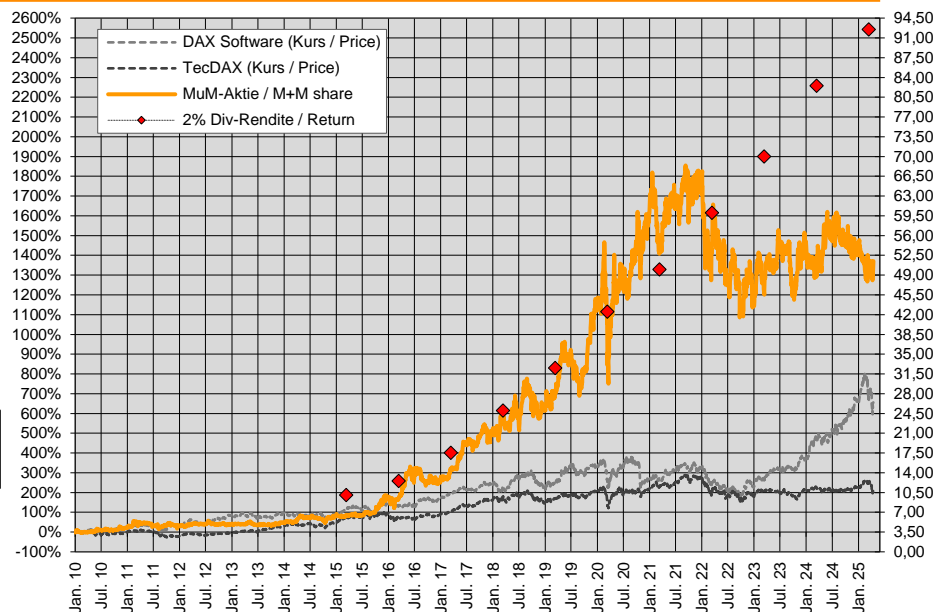
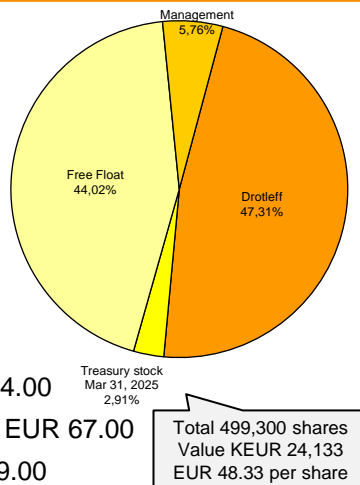
## Designated Sponsors:

- ◆ LBBW, Stuttgart
- ◆ Oddo BHF, Frankfurt

## Analyst Coverage:

- ◆ LBBW: „Buy“ – fair value EUR 64.00
- ◆ SMC Research\*: „Strong buy“ – EUR 67.00
- ◆ Baader Helvea\*: „Buy“ – EUR 69.00
- ◆ Berenberg\*: „Buy“ – EUR 60.00
- ◆ DZ Bank: „Buy“ – EUR 67.00
- ◆ GBC AG: „Buy“ – EUR 65.00

\*available in English language



**Total dividends paid since 2010: EUR 8.75**

**M+M share correlated with ~2% initial dividend return since 2016. Volatility: 2020/21 down to ~1.5% // 2022/23/24/25 up to ~4%**

# Why invest in M+M shares ?

---

- M+M is a leading developer of technical software solutions
  - ◆ Founded 1984 // 41 years of established market position // ~1,200 employees
  - ◆ More than 30,000 active customers with far over 100,000 active seats worldwide
  - ◆ Broad geographical & sectoral allocation allows for flexible change management
  - ◆ Entrepreneurial and 28 years public company
- Highly scalable business model / sustainable profitable growth
  - ◆ Organic growth (CAGR): long-term average approx. 10% p.a.
  - ◆ EPS 2024: 180 Cents – Targeted doubling in 4-5 years: EPS >360 Cents until 2028/29
  - ◆ Profit growth target secured by effective cost management
- Continuously increasing dividend return due to high payout ratio
  - ◆ Investment in M+M Software development is mostly booked as operating expenses, rarely capitalized. That is why M+M can afford a high dividend payout ratio without endangering our future.

**More Information: [www.mum.de](http://www.mum.de) / Investor Relations**